

UDC 621.882.443

October 1989

Square taper washers

for high-strength structural bolting of steel I sections

DIN
6917

Scheiben, viereck, keilförmig, für HV-Schrauben an I-Profilen
 in Stahlkonstruktionen

Supersedes March 1979
 edition.

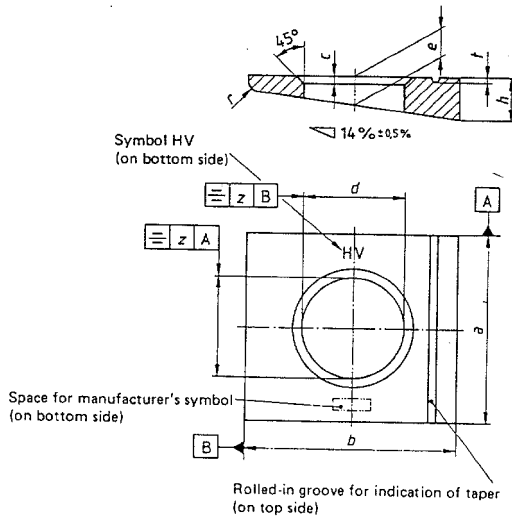
In keeping with current practice in standards published by the International Organization for Standardization (ISO), a comma has been used throughout as the decimal marker.

Dimensions in mm

1 Scope and field of application

Washers as specified in this standard are intended for use in GV and SL structural bolting of steel I sections in accordance with DIN 18800 Part 1, together with DIN 6914 screws and DIN 6915 nuts.

2 Dimensions



Continued on pages 2 and 3

Table 1.

Nominal size ²⁾	For thread size	d		a		b		c		e ¹⁾		h		r	f	z	Mass (7,85 kg/dm ³) in kg per 1000 units, ≈				
		min = nom. inal size	max	min. inal size	max	min. inal size	max	min. inal size	max	min. inal size	max	min. inal size	max								
13	M12	13	13,43	26	24	29,5	28	30	29,35	30,65	1,6	1,9	4,1	6,2	5	7,4	1,6	0,7	1,68	20,4	
17	M16	17	17,43	32	29,5	34,5	36	35,20	36,80	1,6	1,9	5	7,5	6,3	8,7	2	0,8	2	0,8	2	35,7
21	M20	21	21,52	40	37,5	42,5	44	43,20	44,80	2	2,5	6,1	9,2	8	10,4	2,4	0,9	2	0,9	2	66,5
23	M22	23	23,52	44	41,5	46,5	50	49,20	50,80	2	2,5	6,5	10	8,8	11,2	2,4	1	2	1	2	89,8
25	M24	25	25,52	56	53	59	56	55,05	56,95	2	2,5	6,9	10,8	9,3	12,3	2,4	1	3,8	1	3,8	142
28	M27	28	28,52	56	53	59	56	55,05	56,95	2,5	3	6,9	10,8	9,3	12,3	2,4	1	3,8	1	3,8	134
31	M30	31	32	62	59	65	62	61,05	62,95	2,5	3	7,5	11,7	10,2	13,2	2,4	1	3,8	1	3,8	174
37	M36	37	38	68	65	71	68	67,05	68,95	3	3,5	8	12,5	11	14	2,4	1	3,8	1	3,8	210

1) $e = h$ (nominal size) - 0,07 b (nominal size).2) Nominal size is equal to d_{min} .

3 Technical delivery conditions

3.1 Material

Washers shall be in steel as specified in DIN 17 200, quenched and tempered to a hardness of from 295 to 350 HV 10 (e.g. C 45 steel), at the manufacturer's discretion.

3.2 Surface finish

Washers shall have a bright surface finish, be free from burr, and be hot dip galvanized as specified in DIN-267 Part 10.

3.3 Acceptance inspection

Acceptance inspection shall be undertaken on the lines of DIN 267 Part 5.

The specifications given in table 2 shall apply for the major characteristics and the acceptable quality level (AQL).

Table 2.

Major characteristic	AQL value
Hole diameter	1,5
Concentricity	1,5
Taper angle	1,5

4 Designation

Designation of a nominal size 21 washer for use with steel I sections:

Washer DIN 6917 – 21

5 Marking

Washers shall be marked on their bottom side with the manufacturer's symbol and symbol HV.

Standards referred to

- DIN 267 Part 5 Fasteners; technical delivery conditions; acceptance inspection (modified version of ISO 3269, 1984 edition)
- DIN 267 Part 10 Fasteners; technical delivery conditions, hot-dip galvanized components
- DIN 6914 High-strength hexagon head bolts with large widths across flats for structural steel bolting
- DIN 6915 High-strength hexagon nuts with large widths across flats for structural steel bolting
- DIN 17 200 Steels for quenching and tempering; technical delivery conditions
- DIN 18 800 Part 1 Steel structures; design and construction

Previous editions

DIN 6917: 08.62, 12.70, 03.79.

Amendments

The following amendments have been made to the March 1979 edition.

- Limits of size are now specified.
- Use of materials as specified in DIN 17 200 that are comparable with C 45 has been permitted.
- Washers are now to be quenched and tempered, as opposed to hardened (as specified before).
- Washers are now to be hot dip galvanized as specified in DIN 267 Part 10.
- Washers are now to be subjected to acceptance inspection as specified in DIN 267 Part 5 has been included.
- A specification regarding marking with the manufacturer's symbol has been included.
- The standard has been editorially revised.

International Patent Classification

E 04 B 1/38
F 16 B 43/00