

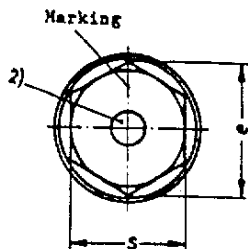
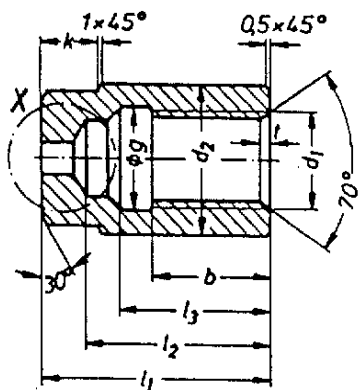
Cap nuts for use with bolts
with waisted shank

DIN
2510
Part 6

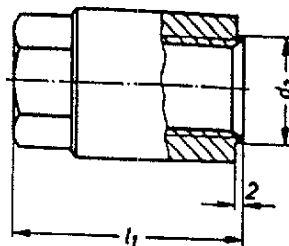
Schraubenverbindungen mit Dehnschaft; Kapselnuttern

Dimensions in mm

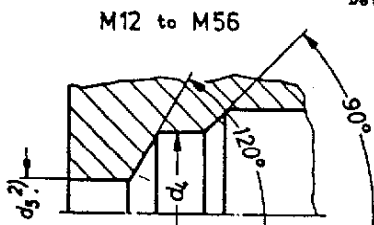
Type AF regular pattern



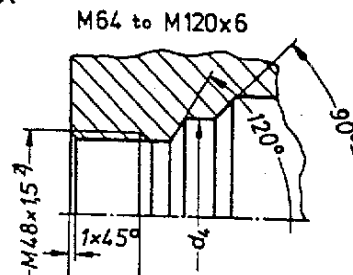
Type BF for internal centring
with extension sleeve D
according to DIN 2510 Part 7



other dimensions and
details as for Type AF



Detail X



Designation of a cap nut of Type AF with thread $d_1 = M 30$ in 24CrMo5 (code letter G¹):
Cap nut A FM 30 DIN 2510 - 24CrMo5

Thread d_1	M 12	M 16	M 20	M 24	M 27	M 30	M 33	M 36	M 39	M 42	M 45
b	18	20,5	24	27,5	30,5	35	38	40,5	43	46	48,5
d_2	21	26	31	35	40	45	49	53,5	58,5	63,5	68,5
d_3	14,5	18,5	22,5	26,5	30,5	33,5	36,5	39,5	42,5	45,5	49,5
d_4	9	13	15	17,5	20	23	26	28	31,5	33,5	36
d_5	4	6	6	10	10	10	10	10	10	10	10
e min.	18,90	21,10	26,75	30,14	35,72	39,98	45,63	45,63	51,28	55,80	55,80
k	7	10	13	14	16	17	22	22	23	23	26
l_1	33	40	49	56	62	68	77	82	86	92	98
l_2	29,5	34,5	40	45,5	50,5	55	60	64,5	67	72	74,5
l_3	23	27,5	32	37,5	40,5	45	48	52,5	55	60	62,5
s	13	17	21	25	28	31	34	37	40	43	46
s	17	19	24	27	32	36	41	41	46	50	50
t	2	2	2,5	3	3	3,5	3,5	4	4	4,5	4,5
Weight kg/1000pieces	70	110	190	240	370	510	700	840	1070	1370	1600

For Footnotes see page 2

Continuation of Table on page 2

For Explanations see DIN 2510 Part 1

Continued on page 2

Thread d_1	M 48	M 52	M 56	M 64	M 72×6	M 80×6	M 90×6	M 100×6	M 110×6	(M 120×6)
b	53,5	57	60,5	69,5	77	84	93	102	111	120
d_2	73,5	78,5	83,5	93,5	105	115	130	146	160	176
d_3	53,5	57,5	63	71	79	87	97	107	119	129
d_4	39	42	47,5	54	58	65	77	89	100	108
d_5	10	10	10	—	—	—	—	—	—	—
e min.	61,31	66,96	72,61	83,91	89,56	100,72	117,67	134,62	151,42	162,72
k	26	27	27	32	32	36	41	45	50	54
l_1	103	109	115	130	140	152	168	183	199	214
l_2	81,5	85	90,5	99,5	107	114	123	132	141	152
l_3	67,5	71	76,5	85,5	93	100	109	118	127	136
g	49	53	57	65	73	81	91	101	111	121
s	55	60	65	75	80	90	105	120	135	145
t	5	5	5,5	6	6	6	6	6	6	6
Weight kg/1000pieces \approx	1900	2400	2900	4200	5700	7300	10700	14800	19900	20100

The bracketed size should be avoided where possible.

Technical conditions of delivery and materials: according to DIN 267 Part 13

Type: α according to DIN 267 Part 13

Marking: according to DIN 267 Part 13

The marking must not be applied to the bearing face.

1) Instead of the code number the code letter of the material may also be stated in the designation. In such cases the designation reads, e.g.:

Cap nut AF M 30 DIN 2510 - G

2) Plain hole up to M 56

Threaded hole for screw plug M 48 \times 1.5 DIN 908 for M 64 and upwards

If cap nuts without hole are required, the letter O should be inserted in the designation, e.g.:

Cap nut AF OM 30 DIN 2510 - G